



T a m p o T e c h n i e k N e d e r l a n d B V

**TTN HP 90 EKO TE**  
Closed inkcup system



<b>Cliche size:</b>	100x200mm
<b>Cliche type:</b>	Thinsteel plates or photopolymer plates
<b>Inkcup:</b>	Ø90mm steel ring
<b>Max. printing area:</b>	Ø80mm
<b>Weight:</b>	approx. 12 kg
<b>Dimensions:</b>	448x174x560 (LxWxH)
<b>Product table:</b>	120x120mm XYZ and rotation adjustable
<b>Pad stroke:</b>	0mm-80mm adjustable
<b>XY Padholder:</b>	Included
<b>Pad:</b>	Included (standard pad no. 63) other pads available on request
<b>Optional items:</b>	XY cross table 100mm including rotation adjustment XY cross table 75mm TTN HP padset

**TTN HP 120 EKO 2 TC**  
Closed inkcup system



<b>Cliche size:</b>	140x175mm
<b>Cliche type:</b>	Thinsteel plates or photopolymer plates
<b>Inkcup:</b>	Ø90mm steel ring (ceramic ring optional available)
<b>Max. printing area:</b>	Ø80mm
<b>Weight:</b>	approx. 14 kg
<b>Dimensions:</b>	448x330x560 (LxWxH)
<b>Product table:</b>	120x120mm XYZ and rotation adjustable
<b>Pad stroke:</b>	0mm-80mm adjustable
<b>XY Padholder:</b>	Included
<b>Pad:</b>	Included (standard 2x pad no. 13) other pads available on request
<b>Optional items:</b>	XY cross table 100mm including rotation adjustment XY cross table 75mm Base plate 100x200mm + inkcup Ø90mm

It is possible that the pictures used in this brochure show more than just the machine. Accessories like pedestals, shuttles and cross tables come separately.

The pad printer can be mounted onto a table with 2 M8 bolts. The frame of the machine is built out of very stabile 8mm steel plate. The machine is equipped with high quality guidings. In the product table are 2 sliding nuts supplied, which allows you to mount for example a product jig.

The base plate and the ink-cup are exchangeable with other TTN machines.

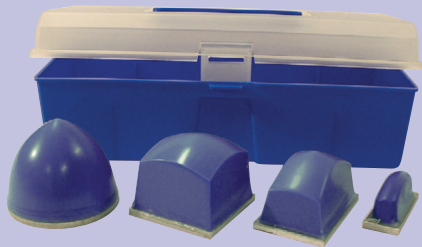
The main advantage of the 2-colour version is that you are still able to operate it with 1 hand. With the optional base plate 100x200mm and inkcup Ø90mm you can also print in 1 colour with larger printsize, without any rebuilding of the machine.

The machine will be supplied with a clear instruction manual and all necessary tools.



T a m p o T e c h n i e k N e d e r l a n d B V

### The TTN HP Pad set

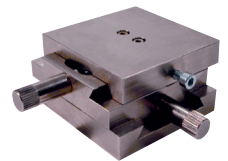


This set includes the following Pads:

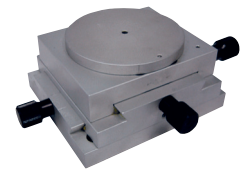
- No 15.0 suitable for printing up to round 65mm
- No 27.0 suitable for printing up to square 55mm
- No 7.0 suitable for printing up to 70x30mm
- No 5.5 suitable for printing up to 50x10mm

The set comes with a plastic storage box

### The TTN Xytable 75mm



### TTN HP Xytable 100mm



including rotation adjustment

It is possible that the pictures used in this brochure show more than just the machine. Accessories like pedestals, shuttles and cross tables come separately.

Tampo Techniek Nederland b.v.  
J.F. Kennedylaan 18  
5555 XD Valkenswaard

[www.tampotechniek.com](http://www.tampotechniek.com)  
[info@tampotechniek.com](mailto:info@tampotechniek.com)

Tel: +31 (0) 40 2014436  
Fax: +31 (0) 40 2044758